

Sevenoaks District Community Safety Partnership

Annual Action Plan 2017 - 2018 **DRAFT**



Introduction	Page 3
Priority issues 2017-18	Page 4
Success measures	Page 6
Domestic Abuse	Page 7
Organised Crime Groups	Page 9
Anti-Social Behaviour incl Environmental Crime	Page 11
Repeat Victims and Locations	Page 14
Safeguarding	Page 16
Mental Health	Page 18
Substance Misuse	Page 20
Road Safety	Page 23
Glossary	Page 25
Partners	Page 26
Terms of reference	Page 28
Partnership structure	Page 29
Map of Sevenoaks District	Page 30

This publication is available in large print. For a copy call (01732 227414).

www.sevenoaks.gov.uk

If you need help communicating with us or understanding this document, we can arrange for an interpreter to help you.

Please contact us on 01732 227000 stating your language and telephone number

Action Plan 2017-18

Introduction

The Sevenoaks District Community Safety Partnership brings together all of the agencies in the District who can have an impact on crime, anti-social behaviour and the fear of crime. A list of partners is set out on page 26. The Partnership has 3 key aims. They are to:

- Reduce and detect crime
- Reduce anti-social behaviour and the fear of crime
- Strengthen community involvement

Each year the Partnership, in common with all of the Community Safety Partnerships in Kent, undertakes an assessment of crime and disorder in the District, using data provided by partners and feedback from residents. The assessment identifies the priority issues for the next year using the following rationale for each community safety type:

- Whether there is significant community concern
- Whether there is an increasing trend
- Whether it contributes to a high volume of crime
- The level of harm it causes
- How well it is performing compared with other parts of Kent and similar partnerships nationally
- Whether the Partnership can add value to the work

This Action Plan identifies where we can best work together to achieve results.

Priority Issues for 2017-18

The Strategic Assessment undertaken during the winter of 2016 has identified 8 priorities for the Partnership to tackle during 2017-18. The data referred to in this Action Plan is based on the Strategic Assessment, and uses data between October 2015 - September 2016, unless otherwise stated. Trends in the identified priorities continue to be monitored on a quarterly basis and the first monitoring will be available in July 2017. Crime types are compared with their “Most Similar Groups” a bench marking group set up by the Home Office, of partnerships thought to have similar characteristics.

The 8 priorities, as ranked in the Strategic Assessment, are:

- Domestic Abuse
- Organised Crime Groups
- Anti-Social Behaviour incl Environmental Crime
- Repeat Victims & Locations
- Safeguarding (incl Prevent, Gangs, Human Trafficking, Modern Slavery, CSE (Child Sexual Exploitation, Vulnerable Adults and Protecting Children)
- Mental Health
- Substance Misuse
- Road Safety

Although the Partnership’s main focus will be the 8 priorities, it will continue to monitor and plan for trends in crime and other community safety issues and address them through the Community Safety Unit’s daily briefings and other tasking arrangements in order to reduce recorded crime.

The Action Plan

The following pages set out the overall targets for the Community Safety Partnership. The Action Plan does not include details of the numerous activities already undertaken by partners, town and parish councils, the voluntary sector and others as part of their day to day work, but highlights activities in addition to core work, which partners will undertake throughout the forthcoming year. All priorities include actions around public perception and reducing repeat offenders/victims.

Funding and monitoring

Funding for the actions included within the Action Plan is available from a number of sources, including partners' own budgets, Police & Crime Commissioner's (PCC) funding which is allocated to district Community Safety Partnerships, Choosing Health funding and other small amounts of funding from a variety of sources.

Regular monitoring will take place to ensure that individual projects continue to deliver positive results as well as value for money and that this Action Plan is on target.

Equalities

In preparing the action plan, issues such as equality and diversity were considered to ensure that everybody feels safe in the District.

SEVENOAKS DISTRICT COMMUNITY SAFETY PARTNERSHIP - ACTION PLAN 2017-18

SUCCESS MEASURES

All recorded crime

All Victim Based Crime reduced compared with the previous year.

Domestic Abuse

Domestic Abuse Action Plan to be 80% on target

Work with agencies to reduce repeat victims

Organised Crime Groups (OCGs)

Create a baseline of OCG's

Anti-Social Behaviour

An improvement in behaviour achieved in 80% of cases accepted by the Anti-Social Behaviour Task Group.

75% of Anti-Social Behaviour victims satisfied with action taken.

Repeat Victims and Locations

Reduce the number of repeat victims through proactive work in the CSU

Safeguarding

Deliver minimum of 4 training sessions on safeguarding topics

Determine a baseline figure for CSE, Prevent, Gangs, Human Trafficking and Modern Slavery cases in the District

Mental Health

Set up a working relationship with Mental Health Service Providers

Substance Misuse

Substance Misuse Action Plan to be 85% on target

Speeding incl Road Safety

Maintain the number of voluntary speed watches and Police enforcement

DOMESTIC ABUSE

The District has the lowest number of Domestic Abuse incidents (1365) ¹, From September 2016, Kent Police stopped providing data for repeat victims. However from 1 October 2015 - 31 August 2016 there were 367 repeat victims (32.9%). **Please note:** Domestic Abuse incidents are not always reported as violence against the person, if there has been no violence recorded. For example if there were a verbal altercation this would be recorded as a Domestic Abuse Incident and not Violence against the Person and that is why the numbers are different.

Domestic abuse incidents in the Sevenoaks District have increased by 33.6%. Domestic Abuse historically is thought to have been considerably under reported. An increase in reporting is therefore to be welcomed and does not necessarily represent an increase in the actual number of incidents.

It is important to remember that these figures are only representative of domestic abuse that was reported to the Police and it is widely recognised that domestic abuse is often unreported. Kent police figures indicate the rates of domestic abuse for Sevenoaks District have been the lowest in Kent for the past three years.

¹ Apparent inconsistency in annual figures arises from the classification of 'incident'. Domestic abuse 'incidents' are not necessarily violent and can refer to verbal disputes which have been reported to Kent Police; as such, not all incidents make it into statistics for violence against the person .

Priority Action		Lead Agency	Other Partners	By When	Funding
DOMESTIC ABUSE					
1.1	Raise awareness and sign posting to local and county wide services and resources were including refuges, particularly targeting repeat victims. Raise awareness in key groups (LGBT, Traveler Groups, Ethnic Minorities, FGM, Honour Based Violence, Arranged Marriages & Elderly Abuse).	CSP Domestic Abuse Task Group DAVSS	All Partners KCC Youth Services GPs Health Visiting Service	On going	Existing Budgets
1.2	Support young people to form positive and healthy relationships (to reduce onset of abusive behaviours and break the cycle of abuse.	DAVSS DA Working Group	Imago Early Help (incl Troubled Families)	March 2018	Existing Budgets
1.3	Work with victims, where the perpetrator has received DVPO/N to provide more support and link in with partners such as Housing Associations.	Police	Housing Association CSU	On-Going	Existing Budgets
1.4	Arrange a Bi-Monthly meeting to look at standard and medium risk victims of DA to reduce repeat and high risk victims.	Police CSU	Housing Association DAVSS Circle Choices	April 2017	Existing Budgets
1.5	DA related incidents to be raised at CSU daily briefing for support services to be in place where possible.	Police CSU	DAVSS Choices	April 2017	Existing Budgets
1.6	DA Campaign for victims to know their rights such as Housing, Benefits	CSU	All	June 2017	Existing Budgets
1.7	Investigate best practice elsewhere to work with GPs eg Iris Campaign	CRC CSU	All	June 2017	Existing Budgets

Organised Crime Groups (OCG's)

Organised Crime comes in many forms. Those involved in organised crime don't just commit serious crime, but local crime within the community, whose activities often feed into much more serious crime and serious violence.

Whilst we very rarely see serious violence and crime in this District, criminal activity locally could have these links to organised crime. Local drug dealers sell drugs trafficked into this country by violent criminal gangs, who exploit the most vulnerable people in our society so as not to get caught themselves. A local car thief is likely to be selling what is stolen to fund their own drug habit. Someone breaking into a garden shed will be selling the items other criminals higher up the chain, which then feed into other much more serious crime.

Criminals behind organised crime often intimidate and create fear, which is intended to prevent the local community reporting what they see. Often the criminals behind this don't even have to try hard to do this - instead relying on word of mouth and reputation.

Over the past year Organised Crime has seen a more targeted approach by Partnerships. According to Kent Police there are 7 OCGs with a recorded impact in the Sevenoaks area. The most common crime types associated with these groups is commonly organised theft

Priority Action		Lead Agency	Other Partners	By When	Funding
Organised Crime Groups (OCG's)					
2.1	Work in Partnership to disrupt recognised OCGs and identify existing and emerging groups.	Police SCD	CSU All	March 2018	Existing Budgets
2.2	Map traffic and lines where OCGs are operating and develop multi-agency analysis of intelligence.	Police CSU	All	March 2018	Existing Budgets
2.3	Develop the practices of multi-agency around prosecutions and evictions. Link up procedures	Police CSU	Housing Associations	March 2018	Existing Budgets
2.4	Partnership meetings to be established around OCG's and use the ethos of Protect, Pursue, Prevent and Prepare	CSP	All	June 2017	Existing Budgets
2.5	Deliver training around OCG's to frontline workers, schools and colleges	Police CSU		March 2017	Existing Budgets
2.6	Establish a directory of key partners and appropriate officers	Police	CSU	June 2017	Existing Budgets

Anti-Social Behaviour including Environmental Crime

ASB accounts for the largest recorded issue when compared to individual crime types in the District and makes up 26% of the total recorded figures when included in crime statistics. Figures show 2025 recorded incidents of ASB occurring within the District reported to Kent Police; The District had the 2nd lowest number of ASB reports in Kent, but saw a slight increase of 2.8% (55 reports).

The Community Safety Unit (CSU) Daily tasking's meetings dealt with 806 ASB/Community Safety calls from October 2015 - September 2016. All actions were followed up and residents were kept updated in all actions unless they had reported anonymously. ASB is most prominent community safety issue in the Sevenoaks District, (including environmental issues) and will continue to be a priority for the CSP.

The top wards reporting were Swanley, Edenbridge and Sevenoaks. The top categories were intimidation and harassment this is followed by reports of noise and then Nuisance Behaviour. Calls by type are always higher than reports received as residents can report more than one type at a time.

The ASB Officer attends the daily tasking meeting within the CSU and also received 212 calls through the Council. All calls were responded to and dealt with by the ASB Officer separately or with partner agencies when needed.

SDC CCTV

During this last year from 1st October 2015 to 30th September 2016 the CCTV control room at Sevenoaks District Council assisted the police with 66 arrests for this period; this is a decrease from the previous year of 49 arrests. The main reason for the drop is the reduction of police recourses available.

West Kent Housing

West Kent received over 400 complaints of anti social behaviour for the period 1 October 2015 to 30 September 2016. Increases in reported anti social behaviour for the same period were identified in alcohol related, criminal behaviour, drugs and Hate Related incidents.

SDC Environmental Health

There has been a decrease in number of noise complaints logged from 588 to 563 (approx. 4.2% decrease 25 reports). October 2015 to September 2016.

Statistics show that the summer months of July, August and September remain Environmental Health's busiest months. Numbers of complaints received during July & August are almost double the number in comparison to the preceding months. The largest numbers of complaints are about loud music, barking dogs and noise from Brands Hatch.

SDC Direct Services

Fly tipping has seen a slight rise this year and remains one of the most prominent issues. The Sevenoaks District Direct Services at SDC saw for the period October 2015- September 2016 - 1326 reports of fly tipping (17.8% increase, 201 more reports). It is worth noting that an increase in reports does not necessarily indicate an increase in incidents, with often more than one report per incident. Of which 844 of these were removed. Ones that could not be removed were either on private property or fly tipping not found.

Abandoned vehicles have increased over the last year, with 298 reports (120 more than same period last year totalling 67%) being made to SDC of which 53 vehicles being removed. The low proportion of vehicles removed is in the most part due to the vast majority of those vehicles reported either being driven or declared SORN (Statutory off Road Notice) and parked off-road.

Graffiti

Graffiti reports to the Council have increased by 35% (7 reports) this year with 27 recorded incidents (incl offensive). There were 29 offensive graffiti reports between October 2015 and September 2016 all of which were removed within the 48 hour deadline set by Sevenoaks District Council. (This was 18 more than same period last year totalling 163%). This is mainly due to a serial offender in Dunton Green.

Priority Action		Lead Agency	Other Partners	By When	Funding
ANTI-SOCIAL BEHAVIOUR Incl ENVIRONMENTAL CRIME					
3.1	Increase number of prosecutions for fly tipping through camera deployment. Awareness campaigns through local Charters (modelled on Keep Britain Tidy pilots) and prioritise hotspots	KCC Clean Kent CSU	KCC Wardens PCSOs Housing Assoc	March 2018	Existing Budgets
3.2	Improve information sharing between partners on vulnerable persons e.g. their need, issues, locations	CSU	NHS Housing Assoc KFRS	March 2018	Existing Budgets
3.3	County wide Case Management System. Continue with Themis development with other partners	Police	Housing Assoc KCC Wardens	March 2018	Existing Budgets
3.4	The Partnership to work together on the ASB Powers to reduce the number of ASB incidents being reported	CSU	All	March 2018	Existing Budgets
3.5	Use Social Media sites to promote successes (Twitter, Facebook, Streetlife)	CSU	All	March 2018	Existing Budgets
3.6	Set up Task and Finish Groups to deliver a focused approach on reducing repeat ASB	CSU	All	On Going	Existing Budgets
3.7	A positive publicity campaign regarding ASB matters for the community	CSU	All	March 2018	Existing Budgets

REPEAT VICTIMS AND LOCATIONS

Repeat Victims and Locations has become a priority throughout 2015-16 through the CSU daily taskings and Police data. Many calls have been received from the same areas and Task and Finish Groups have been set up, but this needs a more Partnership approach to tackle this. Housing Associations have also seen an increase in tackling repeat victims and locations

During this time there have been 12 Task and Finish Groups and increase compared to the previous period last year.

Priority Action		Lead Agency	Other Partners	By When	Funding
REPEAT VICTIMS AND LOCATIONS					
4.1	Develop multi agency training around working with repeat victims	CSU	CSP	March 2018	Existing Budgets
4.2	Set up a shared database around repeat victims and locations	CSU KFRS	All Partners	June 2017	Existing Budgets
4.3	Multi agency approach to tackling offenders who target repeat victims	CSU	All Partners	June 2017	Existing Budgets
4.4	Address illegal raves around vulnerable locations within the District	Police	CSU	March 2018	Existing Budgets
4.5	Work with IPAG on vulnerable victims and locations	Police	CSU	On Going	Existing Budgets

SAFEGUARDING including Child Sexual Exploitation (CSE), Vulnerable Adults and Children, Gangs, Modern Slavery and Human Trafficking and Prevent

Safeguarding includes Young People, Vulnerable Adults, CSE, Modern Slavery, Human Trafficking, Prevent, Care Act, Missing Children and Gangs.

New legislation places a statutory duty on local councils as well as some of the other partner agencies to protect the vulnerable under these crimes. It is also a major contributor to the Kent Police Strategy. The above are a community concern especially in recent media coverage.

Data has been very limited but come November 2016, Morile data will be shared around the above. Data that has been made available is Counter Terrorism. Levels of threat are very low in the District. There have been 4 referrals made between April 2015 - March 2016 and the District has the 7th lowest number of referrals across Kent.

According to Kent Police there have been 6 reports of CSE in the Sevenoaks District.

Priority Action		Lead Agency	Other Partners	By When	Funding
SAFEGUARDING (incl Prevent, Modern Slavery, Human Trafficking, Gangs, Vulnerable Adults and Children)					
5.1	Deliver multi-agency Prevent training. Lead on promotion of Prevent to communities	CSU	CSP	March 2018	Existing Budgets
5.2	Promote Prevent message and training among voluntary sector	CSU	All KCSB	June 2017	Existing Budgets
5.3	Continue to raise profile of CSE and Safeguarding generally and that it is now much more complex and wide ranging among staff and communities	CSU KCSB	All Partners	June 2017	Existing Budgets
5.4	Allocate a lead co-ordinator for actions agreed Task Group for vulnerable adults identified by partners	CSU CCG Quality Team	All Partners	Ongoing	Existing Budgets
5.5	Find out Safeguarding Lead in each agency	CSU	All	December 2017	Existing Budgets
5.6	Work with Police on their Control Strategy especially working with car washes and nail salons within the District	Police	CSU	March 2018	Existing Budgets
5.7	Work with families who have been identified as vulnerable, edge of care, seeking asylum to help provide support	KCC Social Care Early Help	CSP	March 2018	Existing Budgets

Mental Health

Mental Health has proved a concern for the Partnership. Many issues that come throughout the priorities have a link to mental health. However Mental Health Services/Providers are not a key player in the CSU, but should be and that link needs to be made.

Data has been very limited on how many people with a form of mental health links into crime, asb and safeguarding, but continues to be dealt with by agencies in silo and takes up a lot of time and resources. It has been deemed a priority through the CSP and LSP to take forward a joint approach and initiative.

Priority Action		Lead Agency	Other Partners	By When	Funding
Mental Health					
6.1	Identify 10 individuals most in contact with agencies eg Community MARAC for mental health	MOAT CSU CCG	All	April 2017	Existing Budgets
6.2	Closer integration of partnership process. Identify SPOC for Mental Health. Add into daily process and evaluate after 6 months.	Police CSP CCG KCC	CSP	December 2017	Existing Budgets
6.3	Knowledge of organisations structures and contacts. Directory on line and updated regularly	CSU	All	April 2017	Existing Budgets
6.4	Publish existing directories such as Live It Well website, West Kent Dementia Roadmap	Mental Health Working Group		June 2017	Existing Budgets
6.5	Address high instances of self harm among teenagers through published data	Public Health LCPB	All	Ongoing	Existing Budgets
6.6	Making Every Contact Count (MECC) Training for front line workers	CSU Health Hub	All	June 2017	Existing Budgets
6.7	HERO workers making appropriate referrals, accessing early prevention for people presenting housing issues	SDC Housing	CSU	April 2017	Existing Budgets

SUBSTANCE MISUSE

Drugs

Since April 2013, drug offences are no longer recorded in the Victim Based Crime figures released by Kent Police. However, figures collated in I Quanta show total drug possession are up 10% (5 offences) with 55 recorded this year.

Kent Police has provided rolling data on Drug Offences and this has also seen a decrease of 10% (15 offences from 148 to 133).

1 September 2014 - 31 August 2015 there were a total of 321 hospital admissions from 238 individuals for mental and behavioural disorders due to psychoactive substance use (including alcohol and drugs) in the District. This is the second lowest figure in Kent, but an increase from the previous year. There is no current data.

Illegal Highs

Illegal highs are substances that have similar effects to drugs like cocaine or cannabis. They are sometimes called club drugs or new psychoactive substances (NPS).

In 2016, a new Act came in making these substances illegal. Currently there is no baseline data for the Sevenoaks District.

Alcohol

Until recently, alcohol misuse was measured using alcohol attributable hospital admission rates which have been increasing year on year on a District and County level². It is generally felt that these rates no longer accurately reflect alcohol admission trends as some 'attributable' conditions have undergone massive rises in admission rates over recent years.

² Kent has seen a steady increase of alcohol related hospital admissions over the past ten years and alcohol remains the most common substance for those seeking treatment; this year (June 2012 to May 2013) hospital admissions for evidence of alcohol involvement by Blood Alcohol has seen a Countywide increase of 76 (8.2%). Sevenoaks has seen the sharpest rise in numbers during this period (45.5%, 25 additional residents), making a total of 80 alcohol related hospital admissions this year.

Commissioned Services

CRI work closely with a range of partner agencies to improve outcomes for substance misusers. Greensands, a supported housing project in Sevenoaks, is assisted by CRI through the provision of group work and peer support to residents for their substance misuse. A joint working programme has also been developed with Sevenoaks area MIND, to deliver CRI programmes on a weekly basis to Greensands residents and a bi-weekly drop in and referral service for MIND service users. This will facilitate better access to drug and alcohol services for these clients.

Addaction are commissioned by Public Health to deliver services to young people.

The CSP also funds Kenward Trust to deliver Substance Misuse Youth Services Tier 1 and 2. October 15 - September 16 they have engaged with over 200 young people, visited over 20 hotspots that have been a community concern and engaged with schools to deliver substance misuse projects.

Priority Action		Lead Agency	Other Partners	By When	Funding
SUBSTANCE MISUSE					
7.1	Investigate after care (Substance Misuse Liaison Officer) for anyone attending A&E for alcohol and drug related incidents. Also link in with Domestic Abuse.	CCG	CSU Children's Commissioning YOS Adult Safeguarding	June 2017	PCC Joint Bid
7.2	Deliver outreach work to designated areas to address illegal highs, cannabis, alcohol and vaping. Link with mapping of where to buy vape liquid	Kenward Trust	CSU Trading Standards SDC Licensing	On Going	Existing budgets
7.3	Training of front line staff on legislation around illegal highs, drugs, alcohol and vaping. Training to include information from Public Health	CSU	Public Health CGL CCG Kenward Trust Addaction	On Going	Existing Budgets
7.4	Targeted projects on drugs and alcohol highlighted through Public Health data	Public Health CSU	CGL CCG Kenward Trust Addaction	March 2018	Existing Budgets
7.5	Increase session work in schools, develop cascade and mentoring project	Kenward Trust	Schools LCGP	March 2018	Existing Budgets
7.6	Investigate with CLG for drop in sessions in the Sevenoaks District	CLG	CSU	April 2017	Existing Budgets

ROAD SAFETY

Road Traffic Accidents

Throughout Sevenoaks there are major trunk roads i.e. M25/A21 which facilitate the majority of traffic through the District. Unfortunately the figures for major trunk roads and local roads are not available separately and therefore include both local roads and major roads.

Data Summary

Fatal: 4 ↑ Serious: 3 ↓ Slight: 25 ↓ Total: 24 ↓

Currently 27 casualties (57%) above 2020 target of 47 casualties

Highest KSI per district in county - in part due to the extensive HE network in district.

Highest car occupant KSIs in the county: 17-24 and 25-34 key age group.

Highest motorcycle KSIs in the county: 500cc and above for 45-54 and 50-125cc for young riders. Particularly prominent on KCC roads.

Driver/rider error or behaviour - most common cause for collisions.

Speed Watch

Speeding and perception of speed is a high concern for residents across the District and has featured in PACT Panel's action plans.

Speed Watch training has worked well in the District with residents being trained by Kent Police to monitor the speed of vehicles passing through their community.

Priority Action		Lead Agency	Other Partners	By When	Funding
ROAD SAFETY					
8.1	Minimum of 4 Multi-Agency events to address speed enforcement	Police KFRS KCC Wardens	CSU All Partners	March 2018	Existing resources
8.2	Continue to deliver Speed Watch across the District	CSU	Police	March 2018	Existing resources KFRS
8.3	Enforcement in key areas such as speeding, drink/drug driving, mobile phones	Police	CSU	Sept 2017	Existing Budgets
8.4	Work with KFRS on delivering their Road Safety Action Plan across the District	KFRS	CSU	March 2018	KFRS
8.5	Police to uptake a minimum of 10 speed enforcement operations in partnership with Speed Watch sites	Police	CSU	March 2018	Police

GLOSSARY:

ASB - Anti-Social Behaviour

CCTV - Closed Circuit Television

CDAP - Community Domestic Abuse Perpetrators Programme

CSE - Child Sexual Exploitation

CSP - Community Safety Partnership

CSU - Community Safety Unit

DAVSS - Domestic Abuse Volunteer Support Services

KCC - Kent County Council

KCSB - Kent Children's Safeguarding Board

KFRS - Kent Fire & Rescue Service

LCPB - Local Children's Partnership Board

MSG - A Group of Partnerships thought by the Home Office to have similar characteristics and used for benchmarking purposes

PCC - Police & Crime Commissioner

SDC - Sevenoaks District Council

SPOC - Single Point of Contact

YOS - Youth Offending Service

Membership of the Community Safety Partnership and contact details

<p>Sevenoaks District Council Argyle Road Sevenoaks Kent TN13 1GP Tel: 01732 227000 Web: www.sevenoaks.gov.uk</p>	<p>Kent Police 1 Pembury Road Tonbridge Kent TN9 2HS Tel: 01622 690690 Web: www.kent.police.uk</p>	<p>Kent Fire & Rescue Service West Group HQ Sevenoaks Fire Station London Road, Sevenoaks Tel: 01622 692121 Web: www.kent.fire-uk.org</p>	<p>Police & Crime Commissioner Kent Police Headquarters Sutton Road Maidstone ME15 9BZ Tel: 01622 677055 Web: www.kentpa.kent.police.uk</p>
<p>NHS West Kent CCG Wharf House, Medway Wharf Road Tonbridge Kent TN9 1RE Tel: 01732 375200 Web: www.westkentpct.nhs.uk</p>	<p>Kent Surrey and Sussex CRC Ltd Maidstone Corporate Centre 3rd Floor, Maidstone House King Street Maidstone Kent, ME15 6AW Tel: 01622 239147 Website: www.ksscrc.co.uk</p>	<p>KCC Social Services Worrall House 30 Kings Hill Avenue, Kings Hill, West Malling Tel: 0300 041 1400 Web: www.kent.gov.uk</p>	<p>KCC Children, Families and Education The Willows Hilda May Avenue, Swanley, Kent, BR8 7BT Tel: 0300 041 1400 Web: www.kent.gov.uk</p>
<p>Imago 17-19 Monson Road Tunbridge Wells Kent TN1 1LS Tel: 01892 530330 Web: www.imago.org.uk</p>	<p>KCC Youth Service Area Youth Officer C/o Swanley Youth Centre St. Mary's Road Swanley Kent BR8 7BU Tel 01322 615275 Web: www.kent.gov.uk</p>	<p>KCC Trading Standards Public Protection 1st Floor, Invicta House, Maidstone, Kent ME14 1XX Web: www.kent.gov.uk</p>	<p>KCC Community Safety KFRS Station Loose Road Loose Kent Web: www.kent.gov.uk</p>
<p>West Kent Housing Association 101 London Road Sevenoaks Kent TN13 1AX Tel: 01732 749400 Web: www.westkent.org</p>	<p>Kenward Trust Kenward Road Yalding, Maidstone Kent ME18 6AH Tel: 01622 814187 Web: www.kenwardtrust.org.uk</p>	<p>MOAT Homes Galleon Boulevard Crossways Dartford Kent DA2 6QE Tel: 0845 600 1006 Web: www.moat.co.uk</p>	<p>West Kent Extra 101 London Road Sevenoaks Kent TN13 1AX Tel: 01732 749400 Web: www.westkent.org</p>

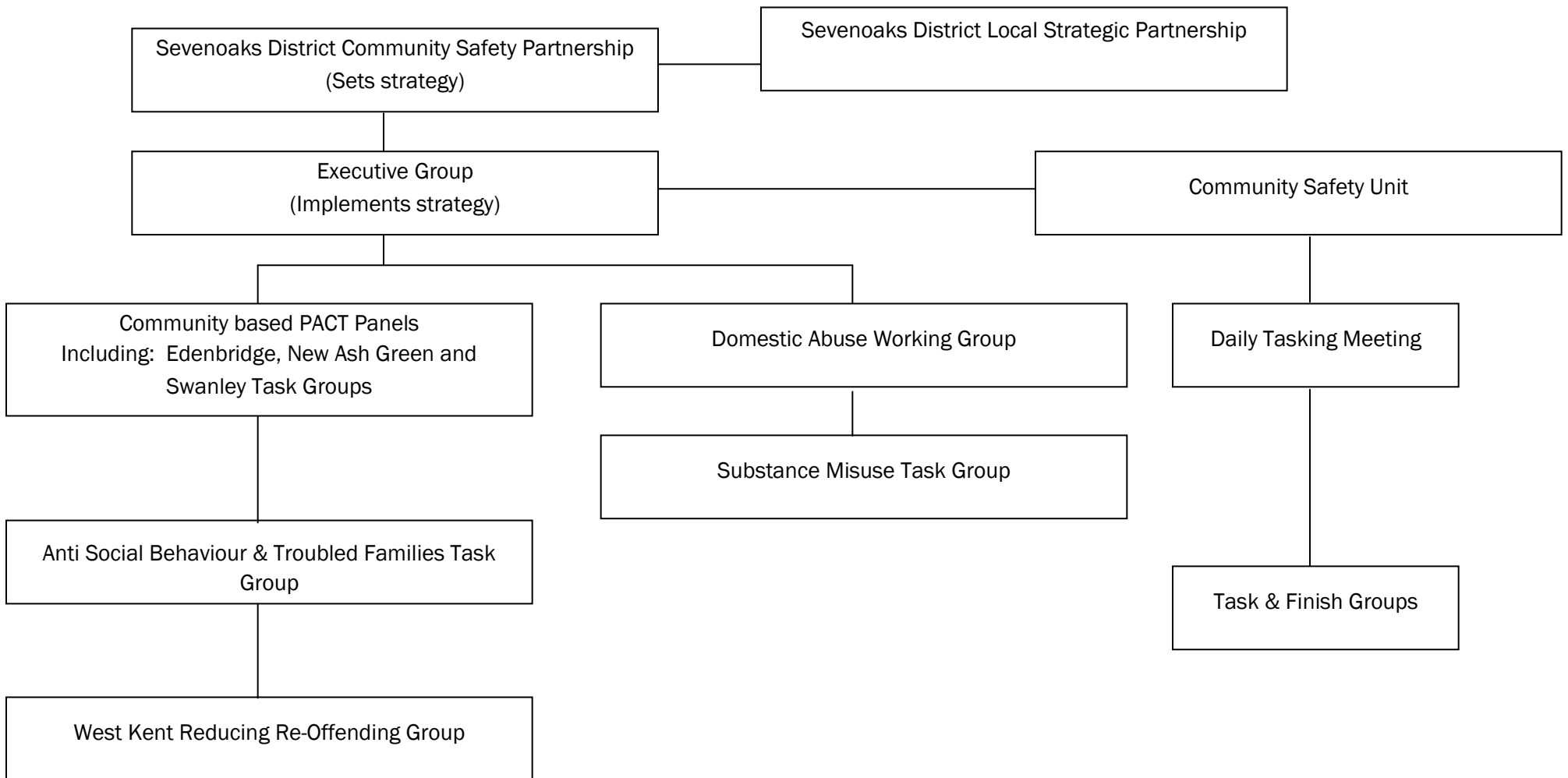
--	--	--	--

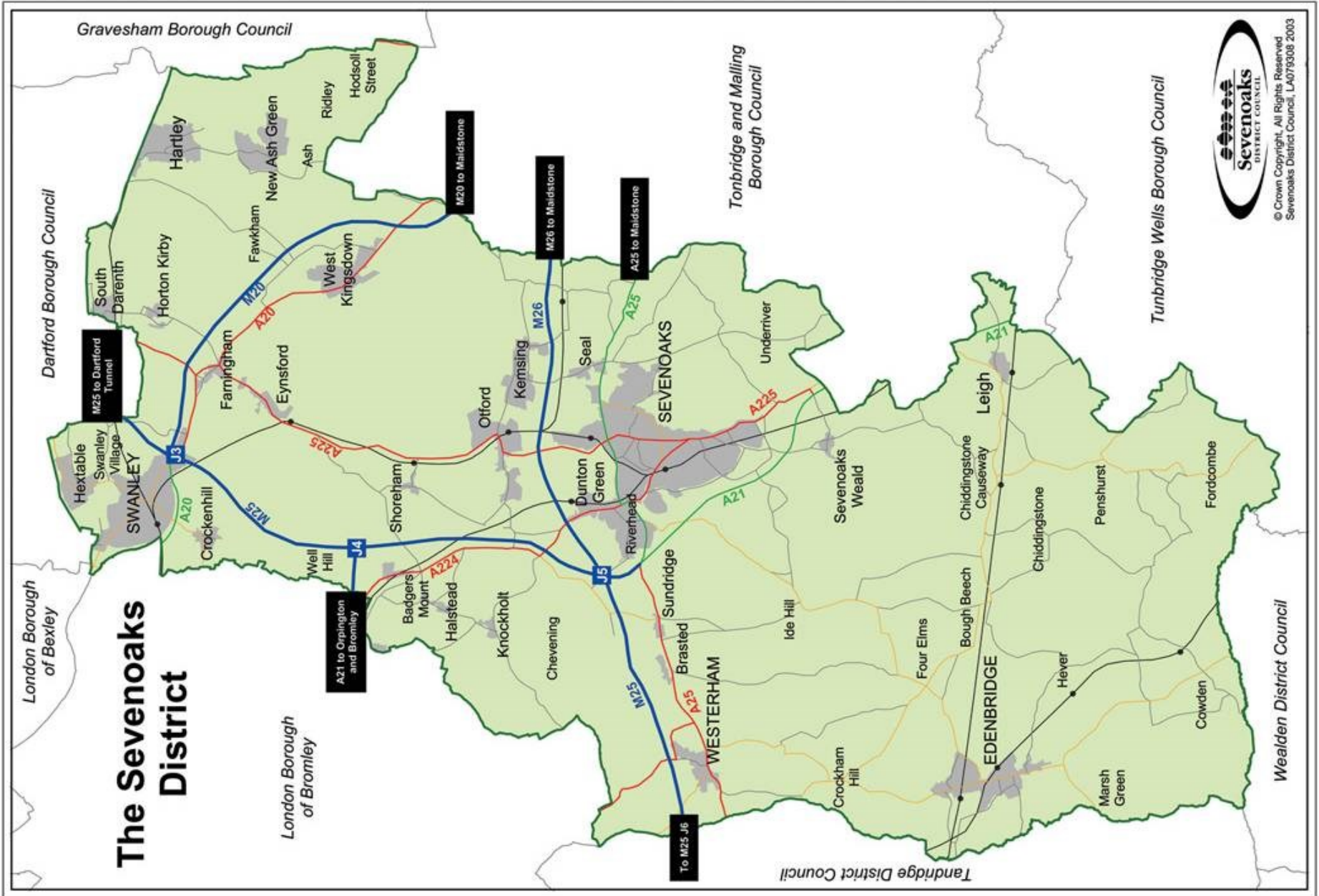
Terms of Reference

The Partnership's terms of reference are to:

- Undertake periodic reviews of community safety in the District and disseminate the findings to the public
- Develop a yearly strategy and action plan to tackle community safety
- Monitor and report progress in meeting the agreed targets and actions
- Secure resources and funding from parent organisations and others for projects to address agreed shared priorities in the Community Safety Action Plan
- Act as a forum for discussion of topical local community safety issues and agree follow up actions if appropriate
- Promote community safety in the District in conjunction with other local organisations and bodies
- Co-ordinate and maintain an overview of all activities relevant to community safety in the District.

Structure of Sevenoaks District Community Safety Partnership





© Crown Copyright. All Rights Reserved
 Sevenoaks District Council, LA079508 2003

Enquiries to:

Community Safety Manager

Sevenoaks District Council

PO Box 183, Argyle Road

Sevenoaks, Kent TN13 1GP

Telephone 01732 227000

Fax 01732 742339

Minicom 01732 227496

E-mail community.safety@sevenoaks.gov.uk

